



# Alexander Hudson Estates

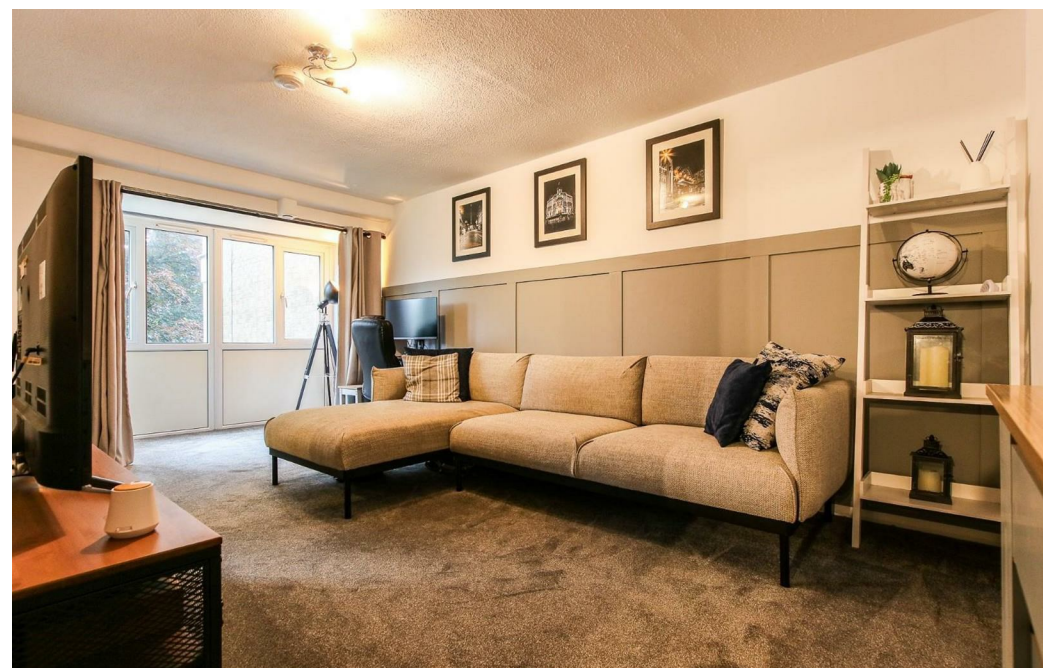
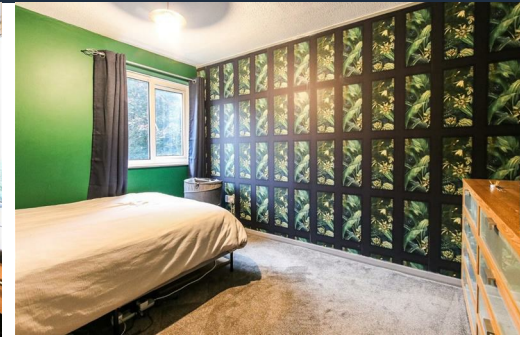
---

Sales Particulars



# Alexander Hudson Estates

Hadrian Court, Garth Thirtythree, Killingworth, NE12



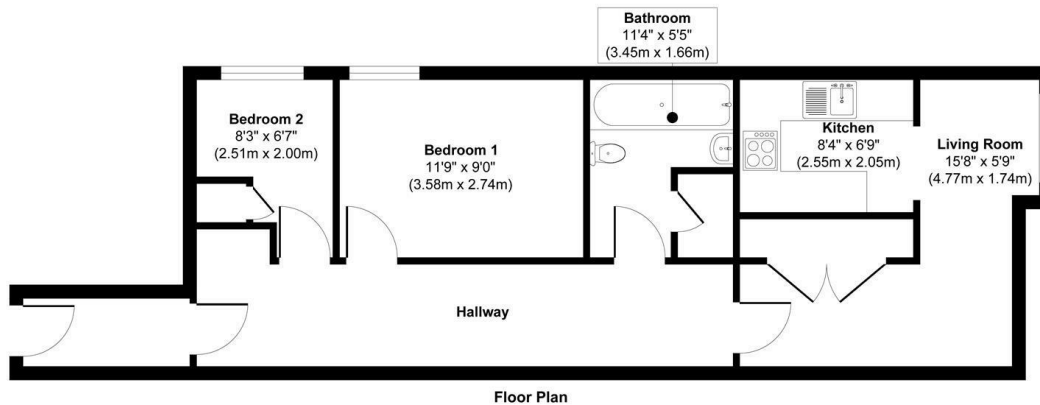


# The Property

Alexander Hudson Estates are pleased to present to the market this spacious, two bedroom, first floor apartment in the sought after area of Killingworth, NE12.

Ideal for investors, downsizers or first time buyers, the property offers comfortable and practical living space throughout. The accommodation includes a bright living room, a separate kitchen, two bedrooms, and a centrally located bathroom, all accessed from a central hallway. The layout provides a clear separation between living and sleeping areas, making the home both functional and easy to live in.

Killingworth has evolved from its mining heritage into a modern, thriving town. The area offers a wide range of amenities, centred around the White Swan Shopping Centre with supermarkets, local shops, welcoming pubs, and restaurants. Outdoor spaces include Killingworth Boating Lake, local bridlepaths, and nearby nature reserves, providing excellent opportunities for leisure and recreation. Transport links are strong, with bus services to Newcastle and surrounding areas and easy access to the A19 for commuters. Families are well served by schools including George Stephenson High School and several local primary schools, making Killingworth & Killingworth Village a vibrant, convenient, and family-friendly location.



Approx. Gross Internal Floor Area 733 sq. ft / 68.10 sq. m  
Illustration for identification purpose only; measurements approximate  
and not to scale, unauthorized reproduction is prohibited. All rights reserved for  
Alexander Hudson Estates

Leasehold  
Council Tax: A  
EPC Rating: 68





---

Alexander Hudson Estates  
The Printworks  
20 Arrow Close  
NE12 6QN

0191 268 7433  
[sales@alexanderhudson.co.uk](mailto:sales@alexanderhudson.co.uk)